



KEMAS PKG
est. 1979

LUXEPACK | F12
NEW YORK



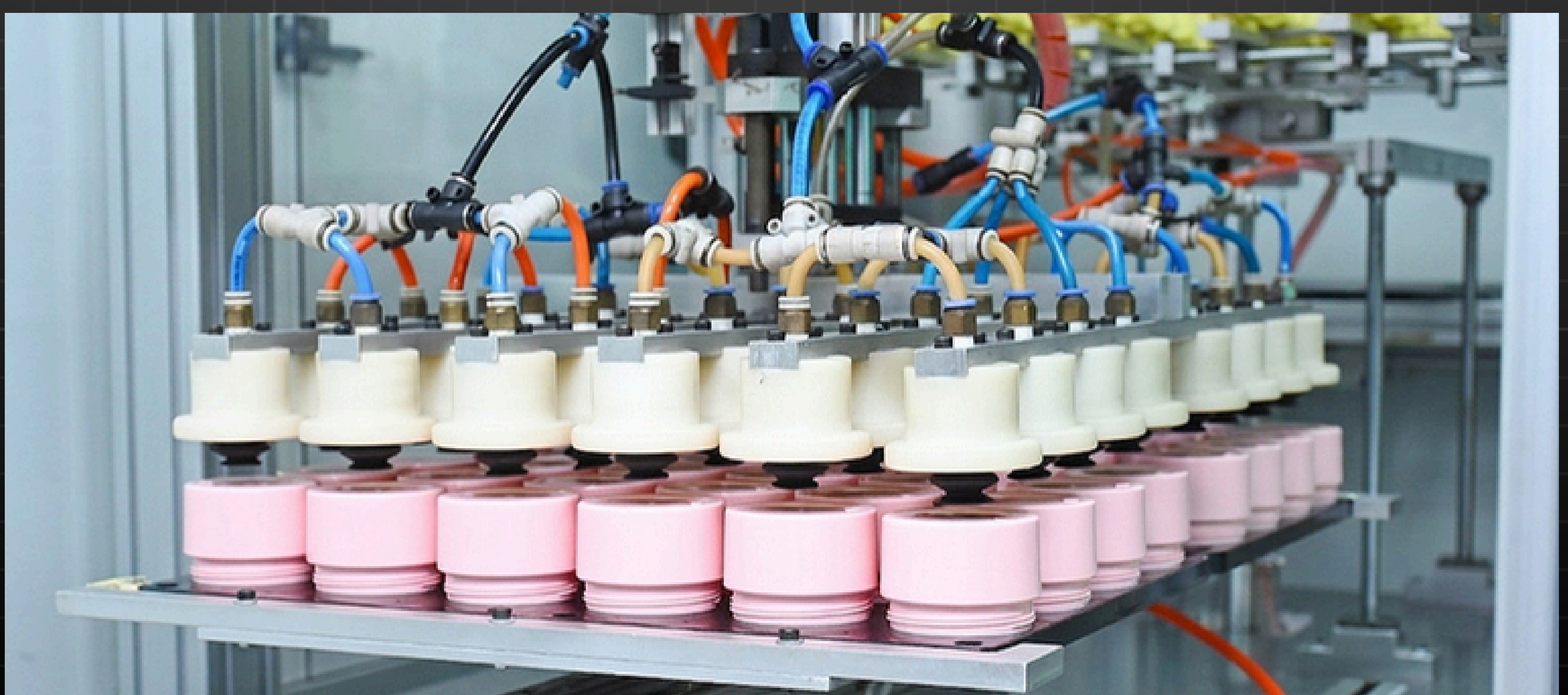
ENGINEERED PACKAGING FOR **WHAT'S NEXT**

**GMP & ISO - CERTIFIED.
PRECISION. CONTROL.
CONSISTENCY. VERIFIED.**

ISO 22716 · ISO 13485 · ISO 9001 · ISO 14001 · SMETA
ISO 37001 · ISO 27001 · ISCC · HALAL · ECOVADIS

45+ YEARS PRECISION MANUFACTURING

- GERMANY & JAPAN INJECTION TECHNOLOGY
- CUSTOM MOLD CREATION & TOOLING ADAPTATION
- FULL-CYCLE METROLOGY & QUALITY CONTROL
- REGULATORY SUSTAINABILITY SOLUTIONS



KEMAS PKG ECOSYSTEM



FULLY INTEGRATED MANUFACTURING



IN-HOUSE
MOLD/TOOLING
PRODUCTION

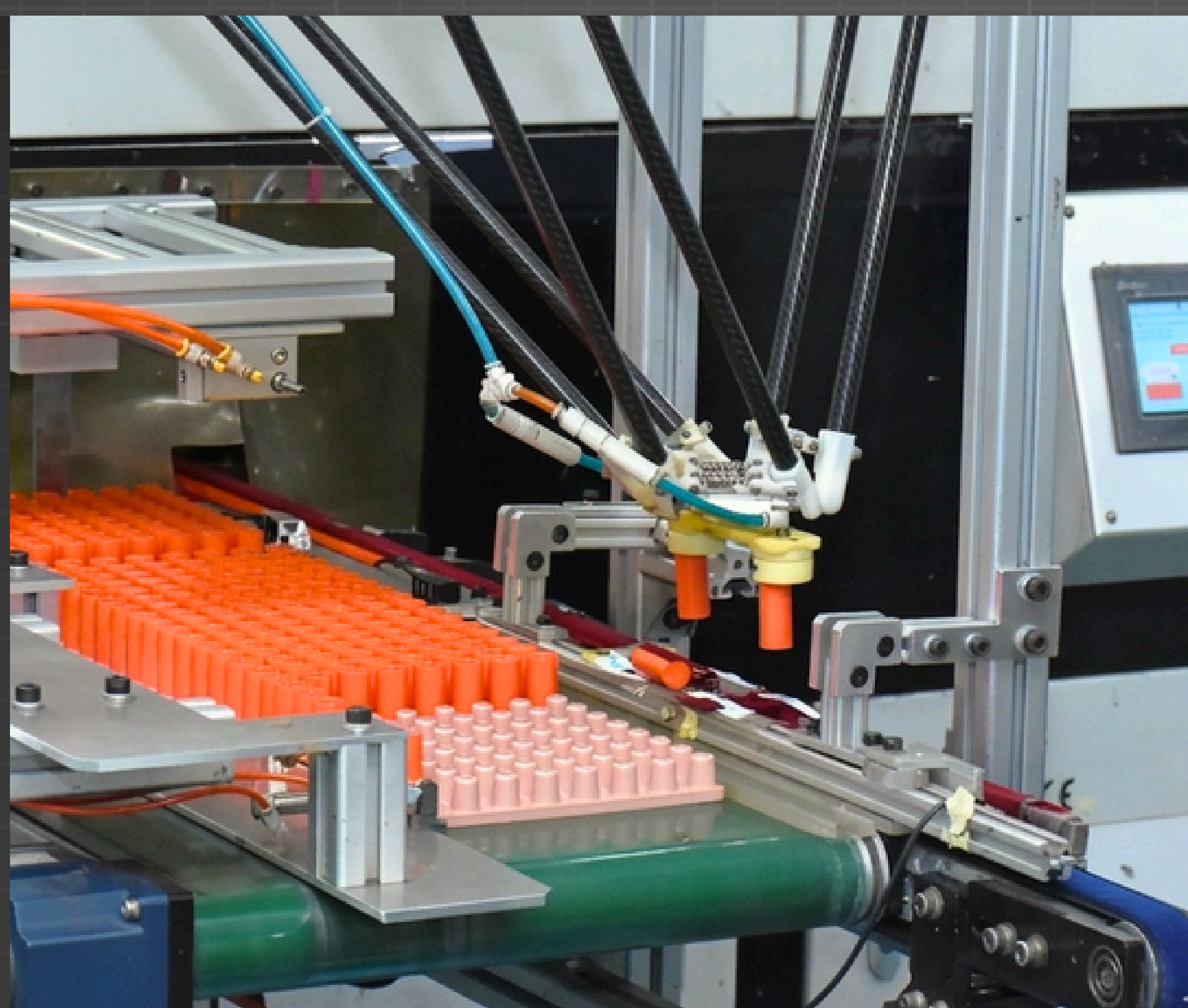
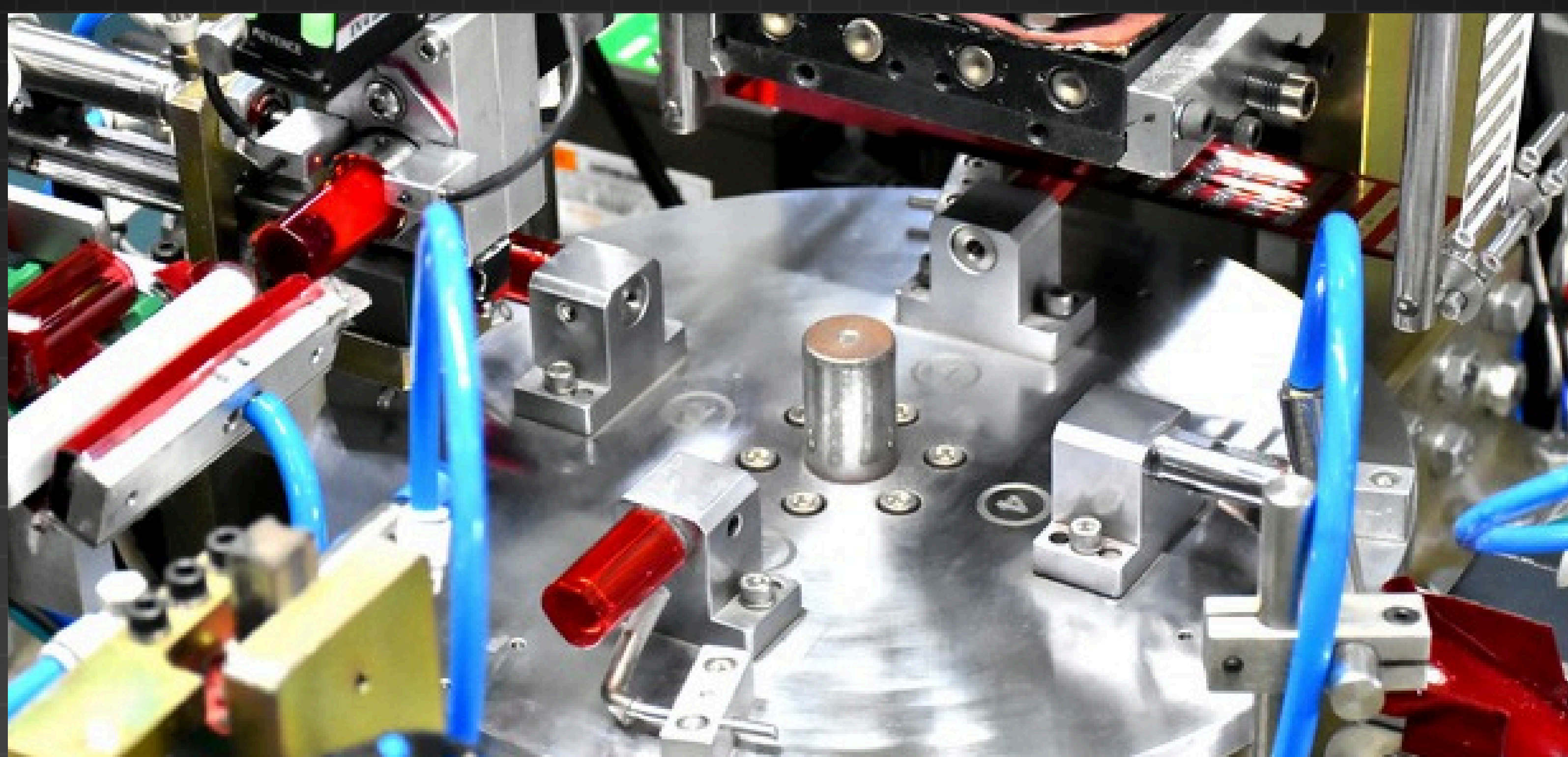


IN-HOUSE
METAL
PRODUCTION

IN-HOUSE
MATERIAL
PROCESSING



DECORATION

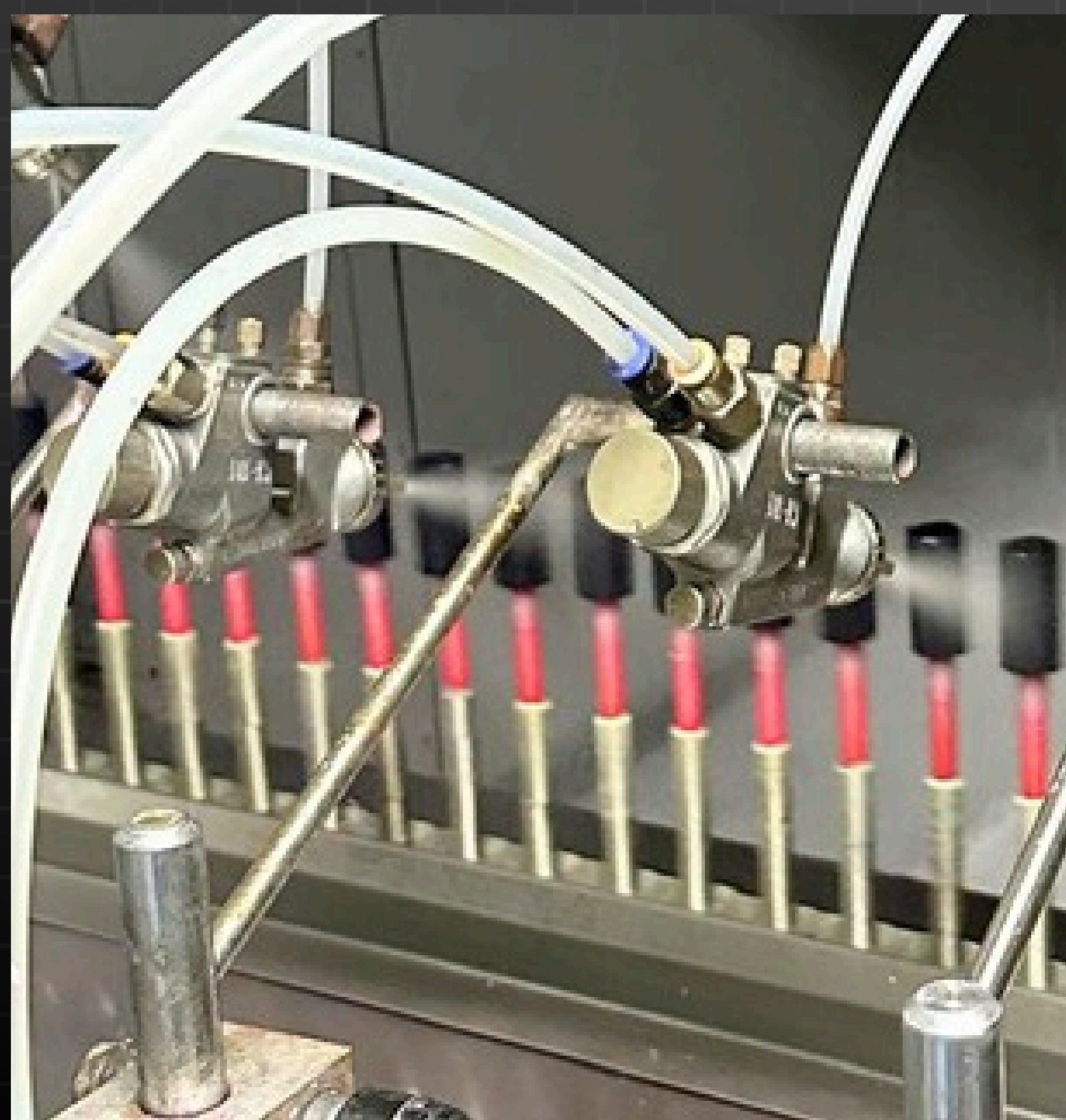


- PAD PRINTING
- 3D PRINTING
- DIGITAL PRINTING
- SILK SCREEN PRINTING
- HOTSTAMPING
- TRANSFER FOIL
- LASER PRINTING
- INJECT DECORATION

SURFACE TREATMENT

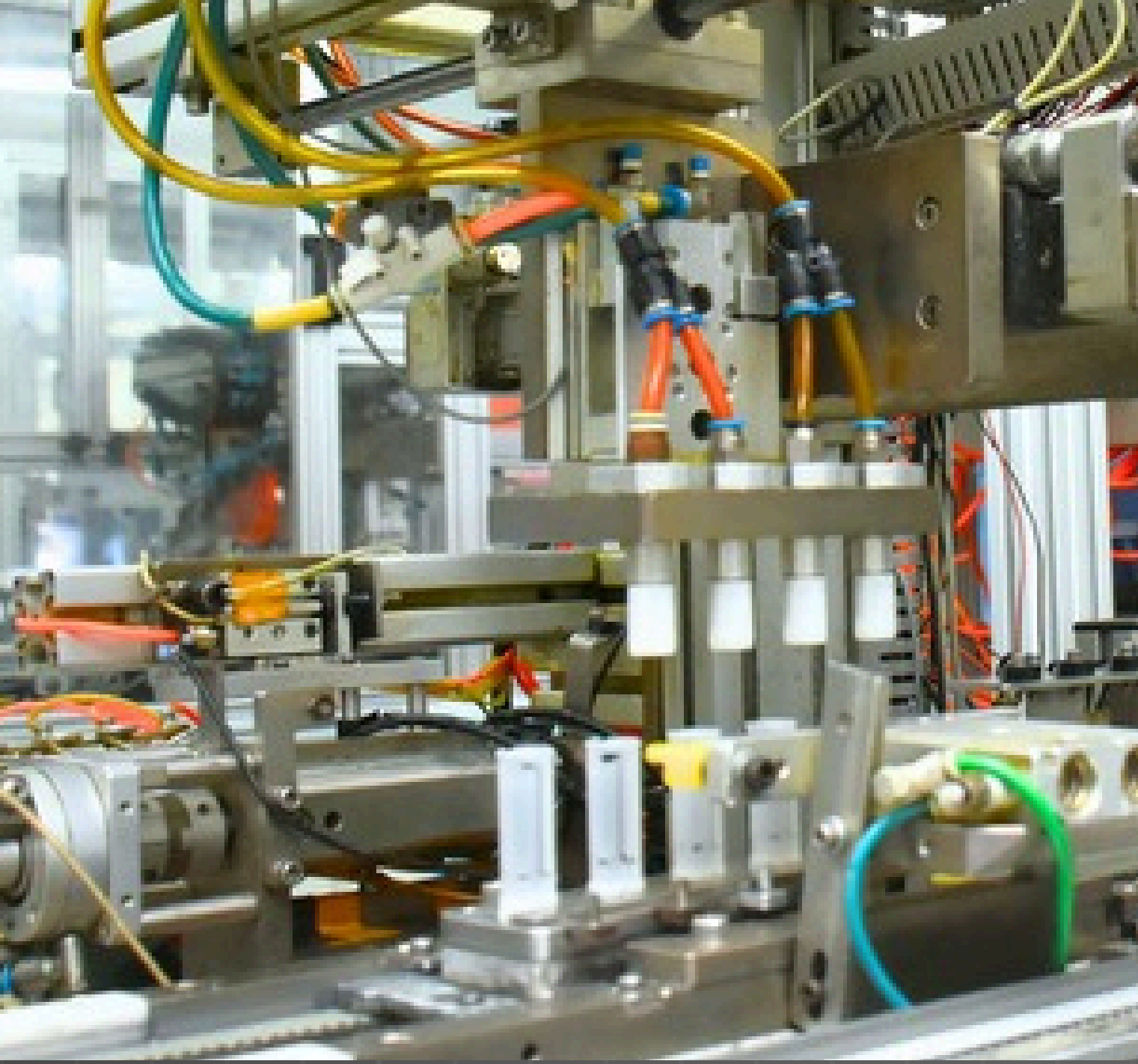


- VACUUM METALIZING
- UV COATING
 - PEARL
 - IRIDESCENT
 - DEW DROP
 - METALLIC
 - GRADIENT
 - LEATHER
 - GLITTER
 - ETC



KAMA

KEMAS AUTOMATED MECHANISM ASSEMBLY



Kemas's proprietary innovation transforms precision mechanism assembly by automating the process, boosting efficiency while maintaining high quality and consistent, reliable results.

KALU

KEMAS AUTOMATED LIPSTICK UNIT

Integrated production line for lipstick manufacturing that streamlines the entire process from molding to packaging into one seamless operation, ensuring efficiency, consistency, and high-quality results.



KALVA

KEMAS AUTOMATED LIQUID VIAL ASSEMBLY



Advanced, fully integrated system that automates the assembly of applicator tube and vial containers from start to finish. It streamlines the entire process to enhance efficiency while ensuring consistent, high-quality results.



KEMAS PKG
est. 1979

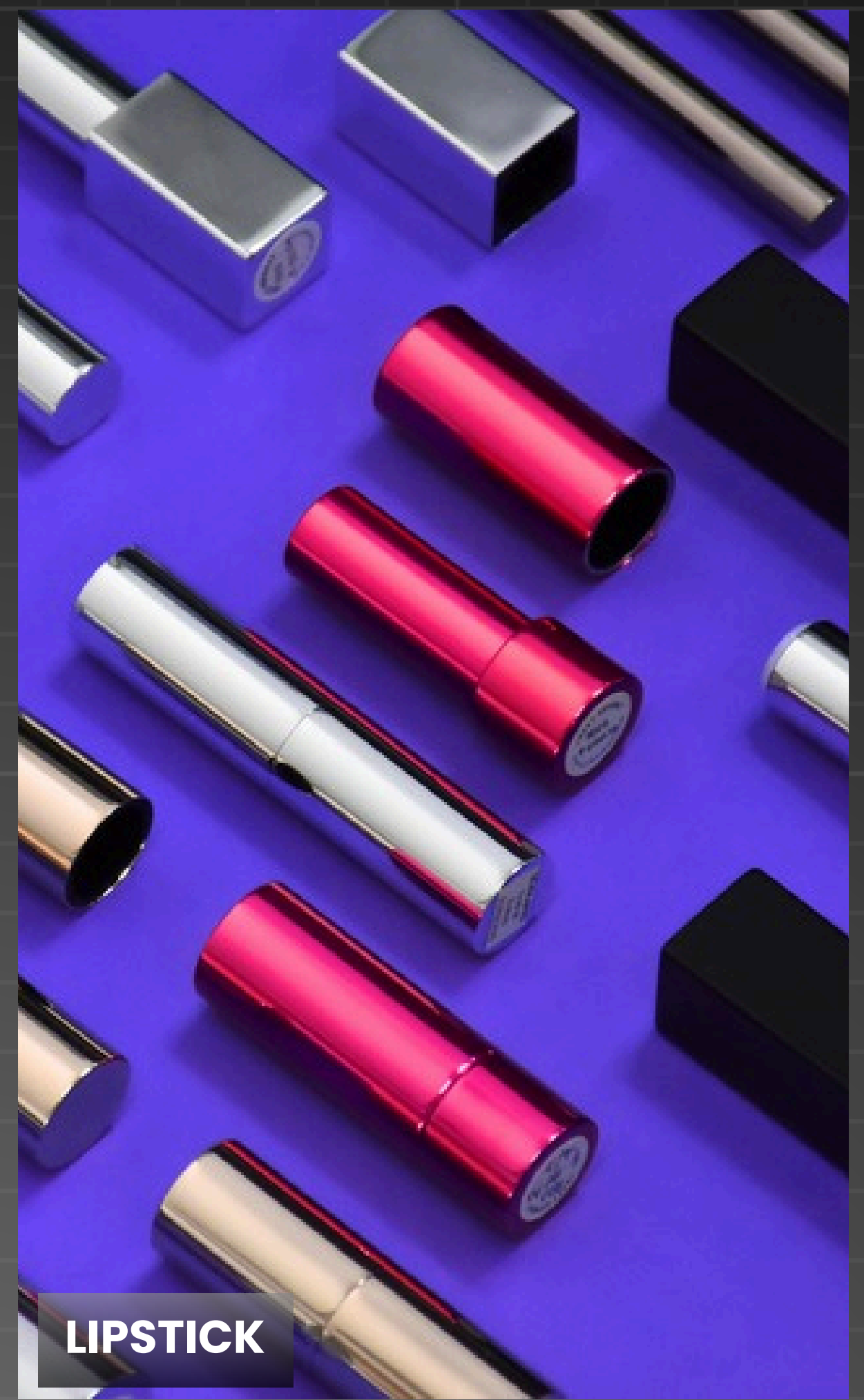
LUXEPACK | F12
NEW YORK



MANUFACTURING PORTOFOLIO



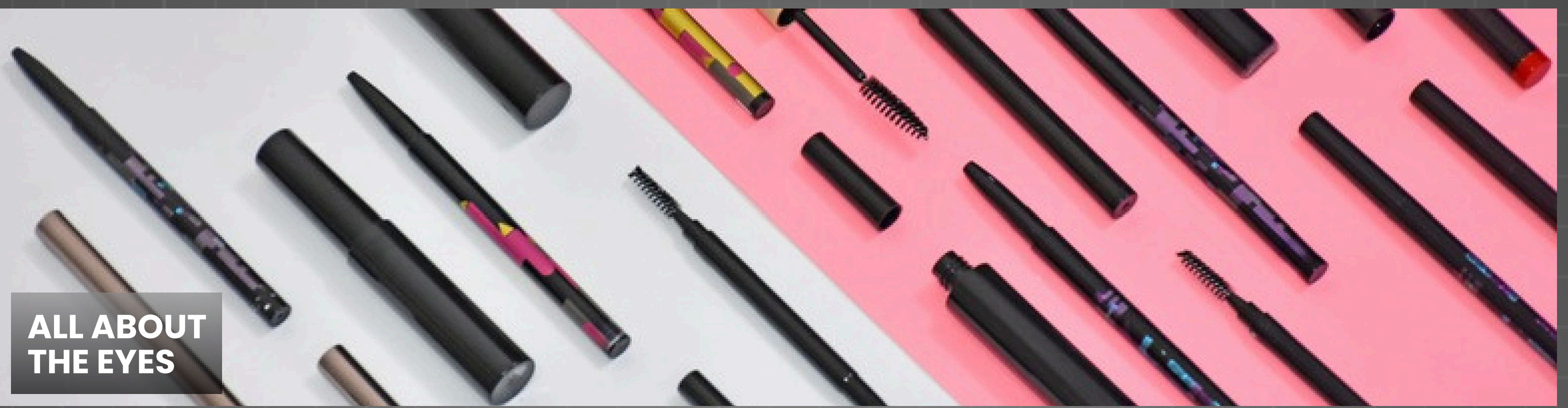
LIQUID VIAL



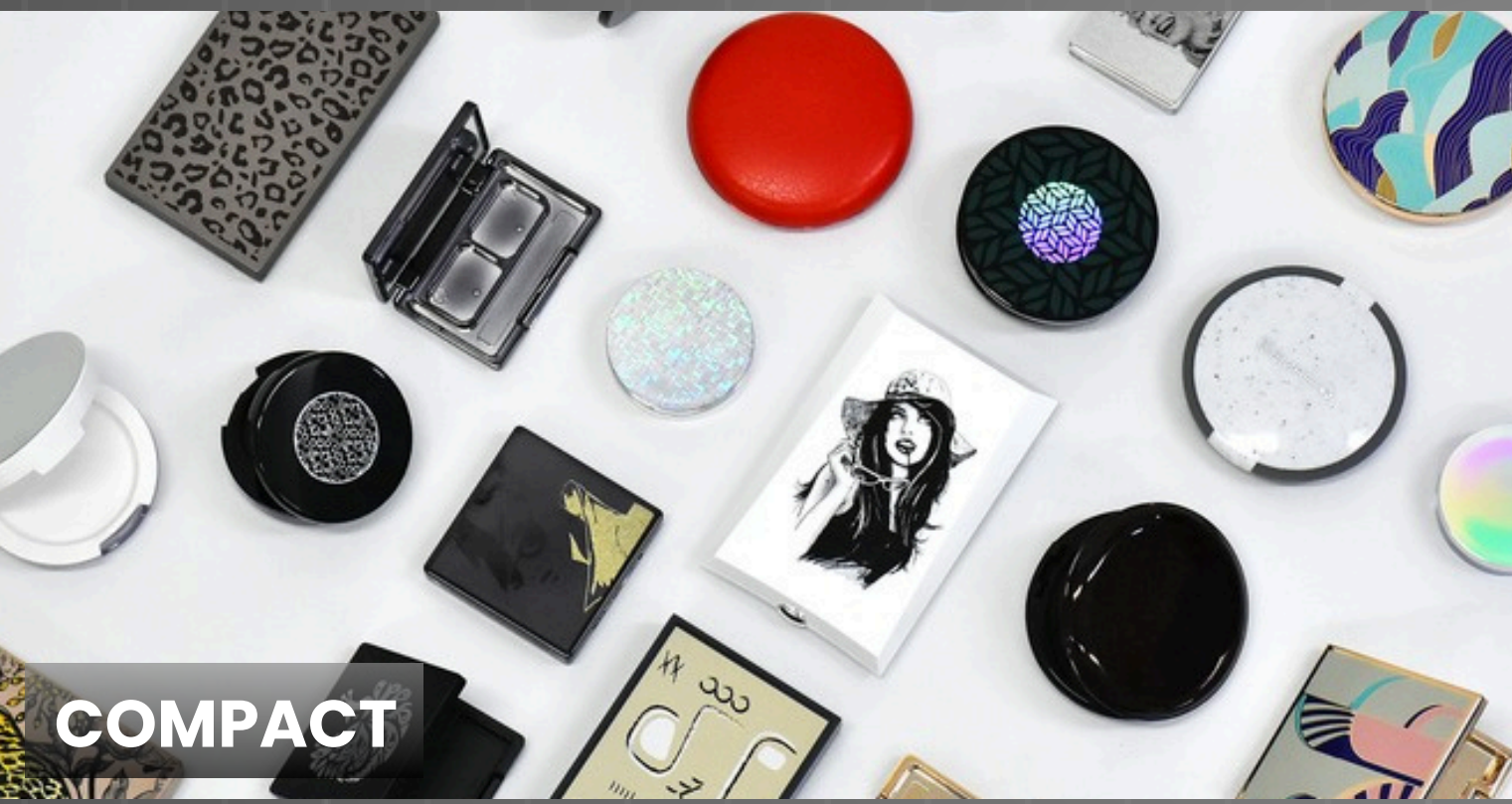
LIPSTICK



JAR & LOOSE POWDER



ALL ABOUT THE EYES

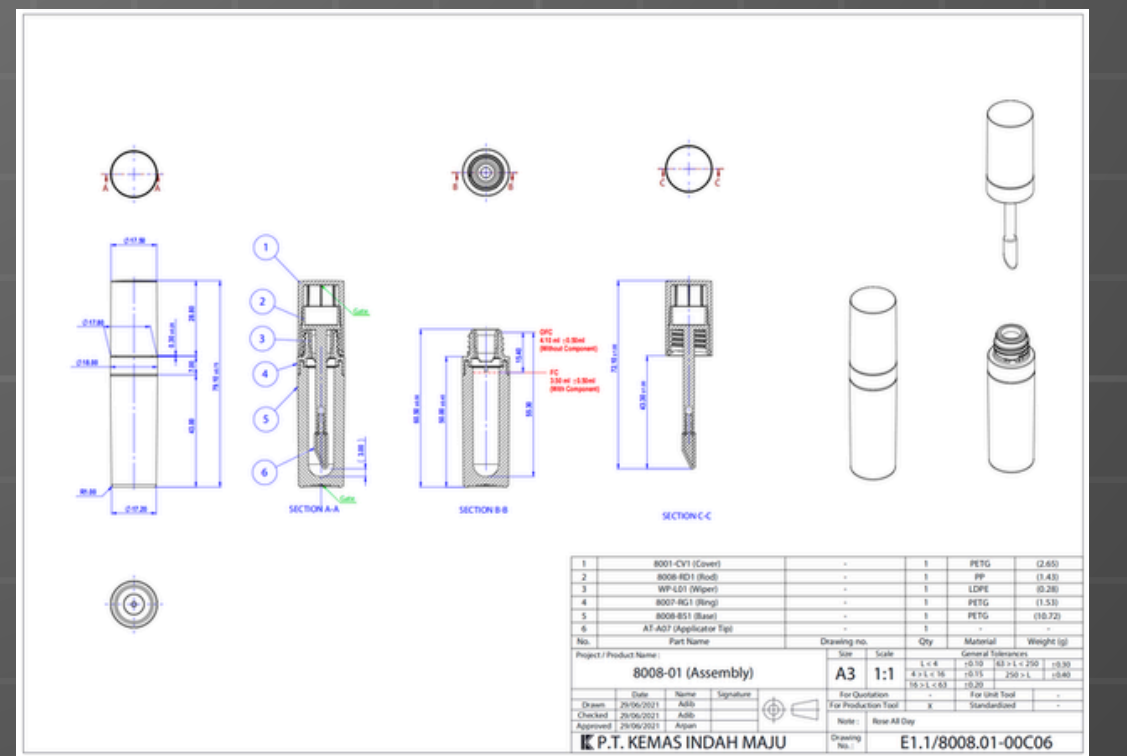
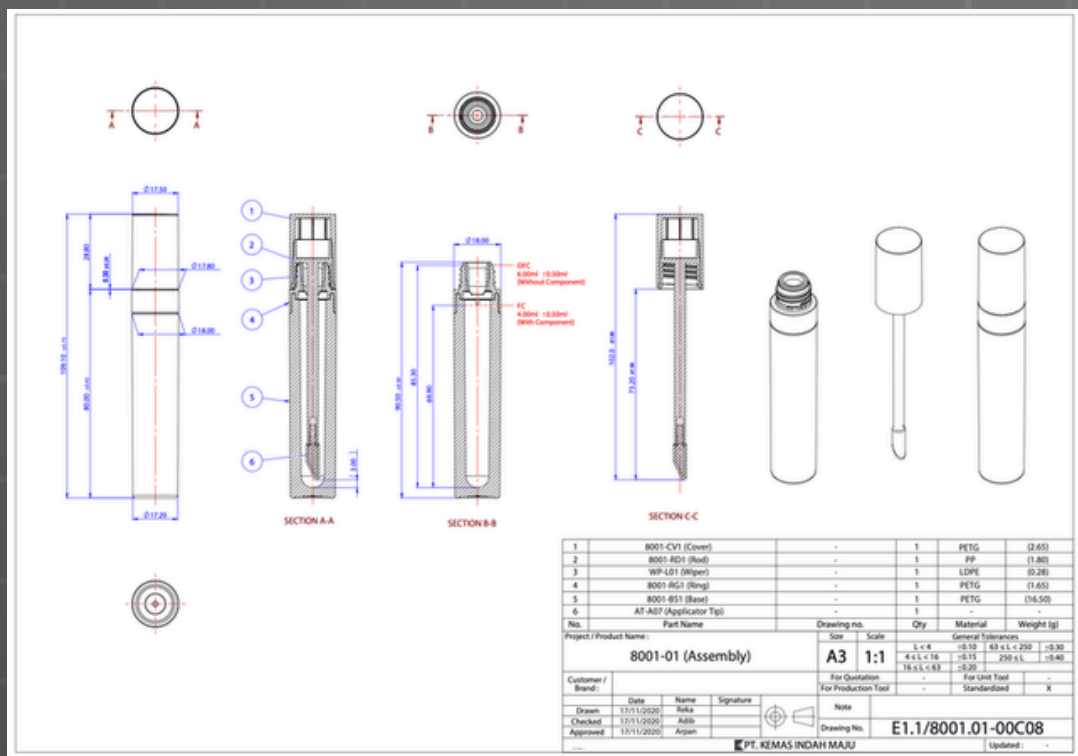


COMPACT



PUFF & APPLICATOR

IN-HOUSE INDUSTRIAL DESIGN TEAM



Design #1
The Crescent Hold

Design #2
The Wave Crest

Design #3
The Diamond Edge

Design #4
The Classic Dome

Design #5
The Emerald Elegance

Design #6
The Gradient Square

Design #7
The Triangular Ascend



CLOSE LOOP ENGINEERING GLOBAL COMPLIANCE & ARCHITECTURE

[PHASE 1: MATERIAL SCIENCE]



30% & 50% PCR INTEGRATION

Neutralizes UK/Spain taxes. Bypasses U.S. EPR mandates. Validated for 30% and 50% thresholds in PP, PCTG, and ABS. **Zero structural compromise.**

ADVANCED COPOLYESTERS (EASTMAN)

Strategic PET integration. Satisfies aggressive PCR laws. Secures U.S. export tax exemptions.

- **EN059 (High-Flow):** Engineered for complex internal geometries.
- **EN076 / IM812 (High-Impact):** Heavy-wall luxury outers. Maximum structural rigidity.

STYRENE-FREE REPLACEMENT

Engineered to bypass France's AGEC Law and U.S. EPS bans. Seamless transition from legacy ABS/SAN to advanced PET. **Zero styrene dependency.**

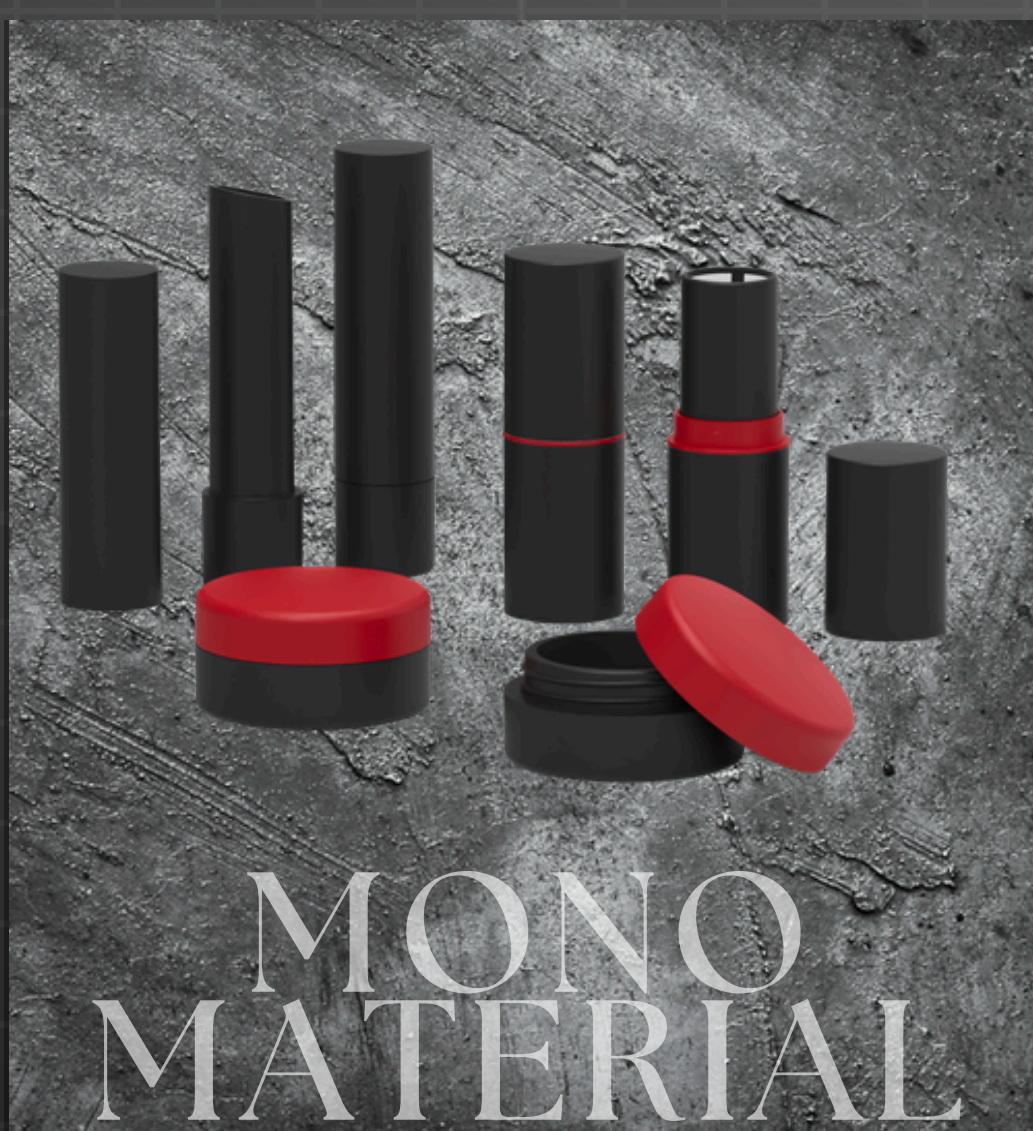


LIMEX/KLB LIMESTONE COMPOSITE

Proprietary KEMAS Limestone Blend (30% or 60% CaCO₃ with PP binder).

- High-density ABS substitute
- Premium tactile weight
- Reduced plastic taxation profile

[PHASE 2: SYSTEM ARCHITECTURE]



MONOMATERIAL END-OF-LIFE

Pre-engineered for EU PPWR & CA SB 54. Single-polymer assemblies. Automated optical sorting. **Zero EOL separation required.**



LIFECYCLE EXTENSION (REFILLABLE)

Permanent modular hardware. Interchangeable cartridges. Precision locking mechanisms. Mathematically reduces plastic volume per life cycle.



DESIGN FOR DISASSEMBLY (DFD)

Engineered to meet strict DfD mandates. Tool-less consumer extraction of glass mirrors and mixed-material accents. Protects the purity of the primary polymer stream. 100% separable architecture.